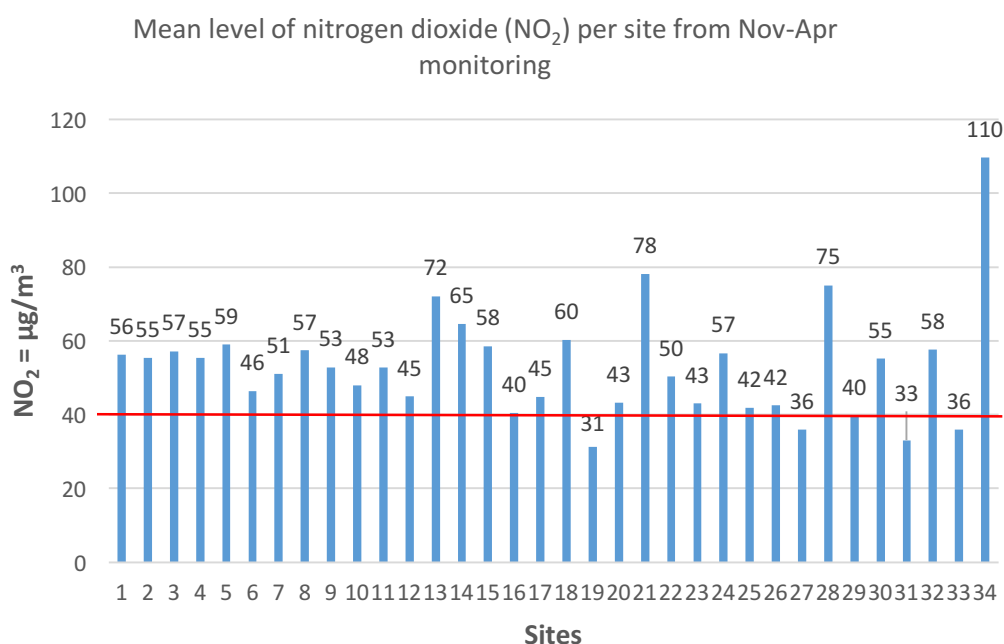
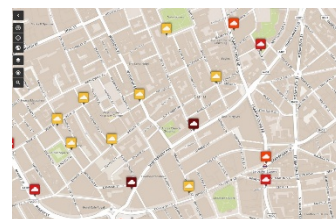
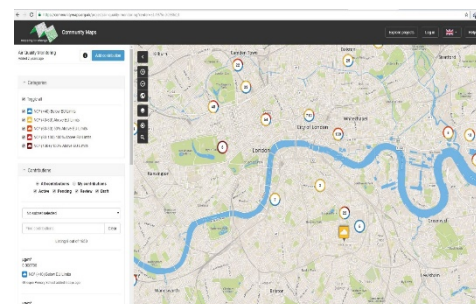


Love Lambeth Air – Air Quality Mapping in Lambeth

Lambeth Council commissioned Mapping for Change to help run a citizen science project on air quality. The Love Lambeth Air project provided local people with the materials and support required to collect measurements for nitrogen dioxide (NO₂) across Lambeth. This was the first exercise of its kind and sought to create a more granular picture of air quality in areas not previously monitored.

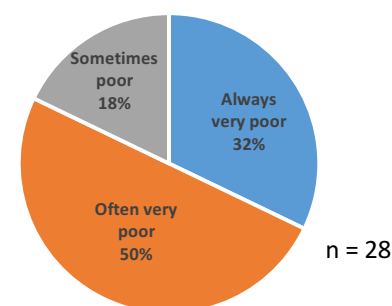
More than 30 residents were consulted on specific air quality issues, the suspected sources of pollution and the areas they thought worst affected. This formed the basis for the site selection. A total of 34 locations across Lambeth borough were monitored for NO₂ levels. Diffusion tubes were changed monthly over a six month period. The data was then analysed, and the results were published on the Community Air Quality Map.

The results obtained have been uploaded to the Air Quality Community Map. This map can be seen at <http://www.communitymaps.org.uk>. Below is a summary of the results.



Red line represents EU limit of NO₂ (annual average)

Residents perception of air quality in Lambeth at the start of the project



Key findings from Lambeth

- Higher levels of pollution in the north of the borough in areas such as Waterloo
- Only 4/34 sites were within the EU legal limits (annual mean)
- One site located under Waterloo Bridge Road recorded 109 µg, exceeding the EU annual mean by more than 100%
- 85% of the sites show their highest reading in January 2017

Contact: Louise Francis, Mapping for Change

Email: info@mappingforchange.org.uk Tel: 020 7679 2296

Website: www.mappingforchange.org.uk

See back for map of sites →

