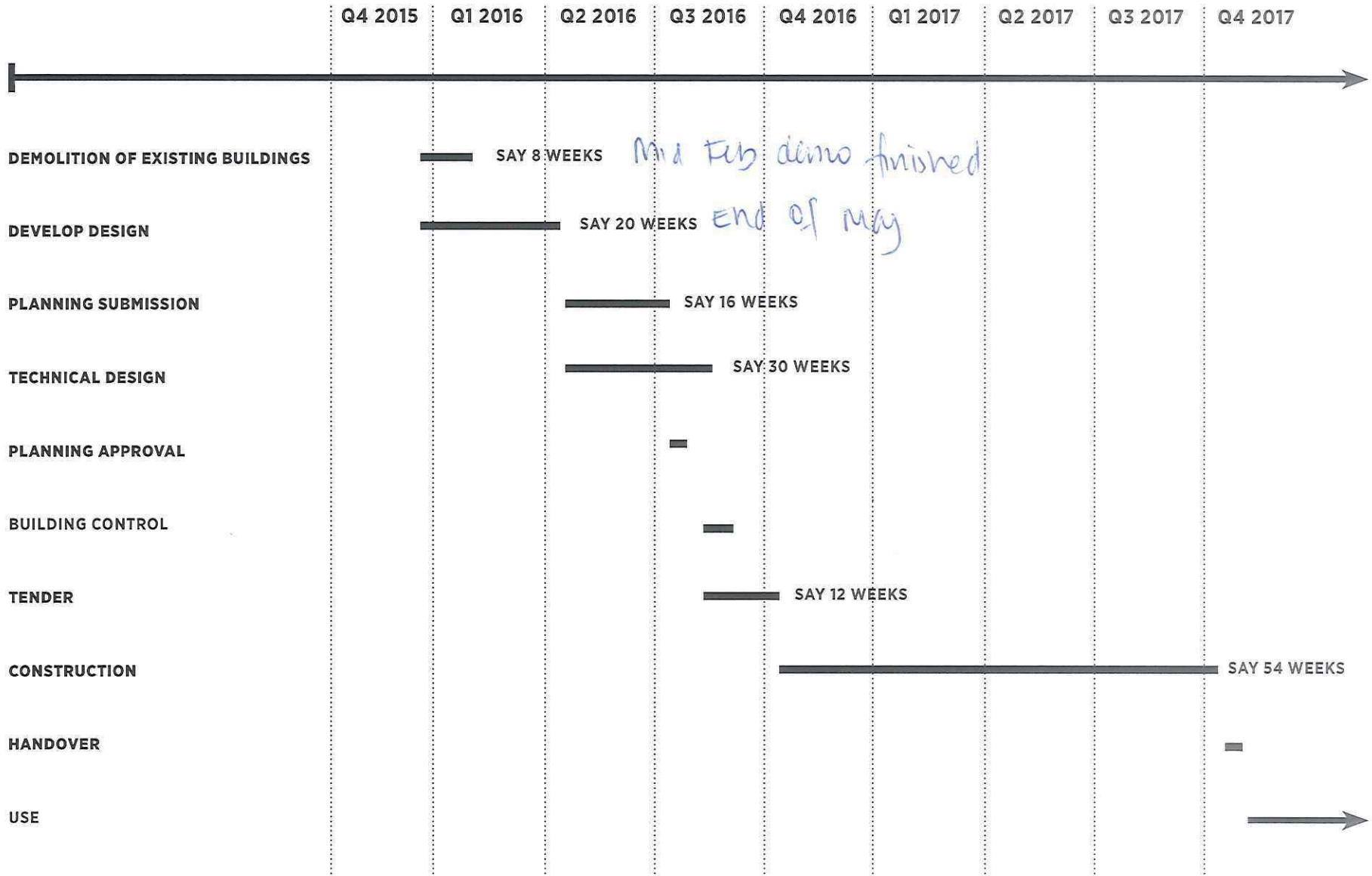


COBURG CRESCENT

NEW RESOURCE CENTRE

15.01.2016

COBURG CRESCENT PROJECT PROGRAM



ENGAGEMENT SO FAR ...

2012-2015 - WE RECEIVED POSITIVE FEEDBACK FROM CARERS, FAMILY MEMBERS, PEOPLE WITH LEARNING DISABILITIES AND LOCAL RESIDENTS AROUND DEVELOPMENT OF COBURG CRESCENT

PEOPLE IDENTIFIED FOUR AREAS WHERE THEY PARTICULARLY WANTED SUPPORT FROM THE NEW BUILDING:

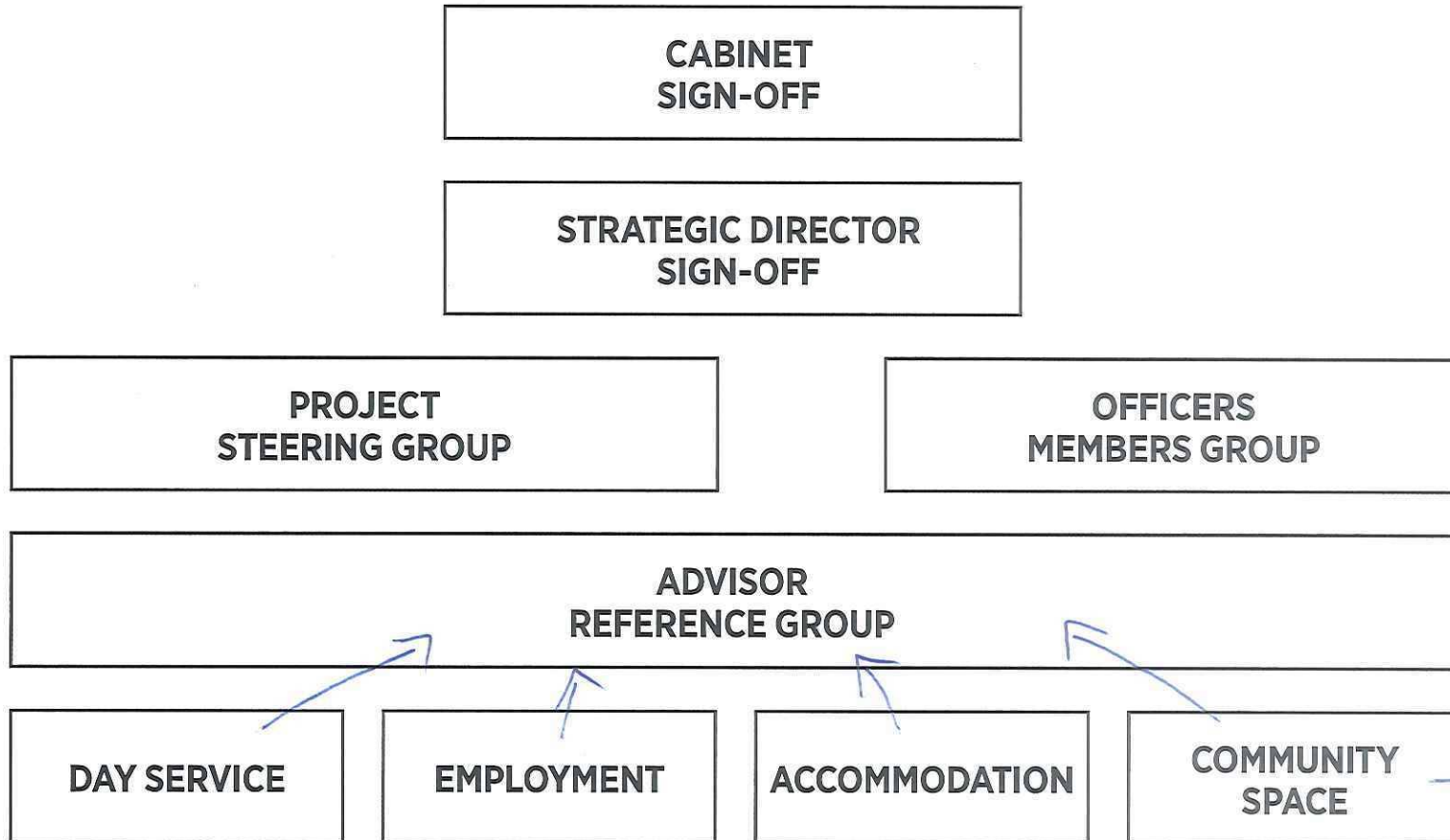
DAY SERVICES

EMPLOYMENT

ACCOMMODATION - short term support

COMMUNITY SPACE - used as a drop in centre for families / carers etc

PROPOSED ENGAGEMENT GOVERNANCE



→ representation who will form the advisor reference group.

TO CREATE A NEW RESOURCE CENTRE THAT.....

... CAN BECOME PART OF THE LOCAL COMMUNITY

... IS SUSTAINABLE

... IS INTEGRATED INTO THE LANDSCAPE

... WILL FOCUS ON THE WELL-BEING OF SERVICE USERS AND STAFF

... IS THERAPEUTIC, NOT INSTITUTIONAL

... MAXIMIZE INDEPENDENCE AND MINIMISE ISOLATION

... PROVIDES FLEXIBLE AND EFFICIENT USE OF SPACE

... IS DESIGNED FOR DIGNITY

... ENHANCE ORIENTATION AND WAY-FINDING